



business with
OSAKA
 daily necessities

Osaka Businesses with
 Attractive Daily Items

CONTACT OSAKA BUSINESS DEVELOPMENT AGENCY

Mail bw-osaka@obda.or.jp HP <https://www.obda.or.jp/en.html>



OSAKA BUSINESS
 DEVELOPMENT AGENCY



Osaka's Attractive Products Will Enrich Your Life and Make it More Enjoyable.

The daily items that originate in Osaka
are naturally of high quality but also
have unique, distinctive features.

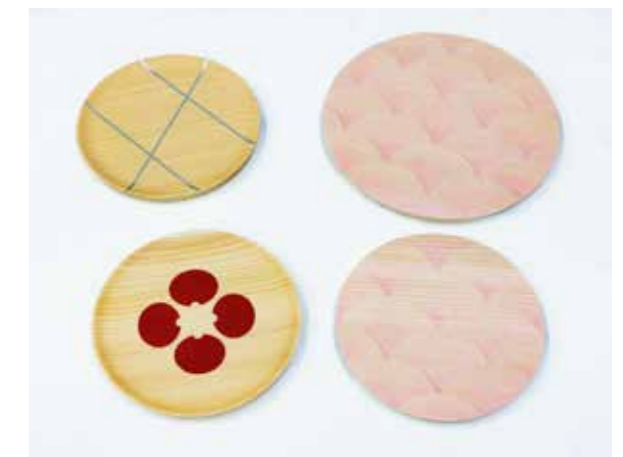
Through expert artisanship, materials are
carefully selected to make products
that are environmentally friendly and
convenient for usage in daily life.

In this edition, we will introduce you to the
prominent Osaka businesses that create
products brimming with appeal.

※The patents and trademarks listed in this booklet are based on the
status of patents and trademarks granted in Japan.
Please contact the listed companies individually for information on the
status of patents and trademarks granted outside of Japan.



Masu from RIJINDA



Maeda Woodworks
Carole Baijings Studio for Design



Amulet Holder



Featured Business 1 Tradition

One-of-a-Kind Wooden Objects Made with Artistic "Danjiri" Carving Techniques

CEO
MAEDA Akihiko

Using carefully selected domestic cypress (hinoki) wood, the bottom of the "masu" (a traditional, square-shaped vessel used for Japanese sake for important occasions) is inscribed with auspicious signs and Japanese characters and there is an indication of the Maeda Woodworks. Mr. Maeda, the CEO of Maeda Woodworks and a skilled carver of "danjiri" (traditional carts used in the famous "Danjiri Festival" held in southern Osaka), carves iconic scenes of historical military battles and Japanese mythologies. Under the brand "RIJINDA", which was launched with the aim of breaking new ground by utilizing the "danjiri" carving technique, which is characterized by dynamism and delicate artisanship, various completely custom-made wooden goods are produced such as "masu", wine coolers, bottle coolers, bags, and lightings, which achieve the warmth of hands that cannot be generated by machines.

In 2022, Mr. Maeda participated in the "Craft Runways" program to support the overseas expansion of Japan's manufacturing and collaborated with Dutch designer Ms. Carol Baijings. They showcased wooden plates that utilized wood carving techniques and implemented vivid colors. The "platinum grid" is an item that allows you to enjoy the grain of the wood simultaneously with the gold leaf, with a coating that enhances the grain and feeling of the wood applied by a gold leaf artisan from Kanazawa and a lacquerware artisan in Wakayama.

The "Urushi leaves" plate features a bright red lacquer coating applied with advanced techniques by traditional artisans among the Buddhist altar artisans. Mr. Maeda continues to accept the challenge of passing Japan's traditional crafts on to the next generation and disseminating them overseas.

Maeda Woodworks

[Address] #303 Marumiya Bldg. 1-14-5 Tenjimbashi, Kita-ku, Osaka City

[Product name] wood carving goods from "RIJINDA"



▲HP



▲Instagram



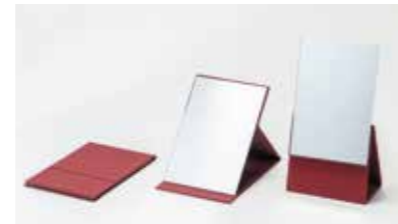
▲X



LED Stand Mirror



Makeup Mirror



2 Way Folding Mirror



Styling Stand Mirror



Maki-e Mirror

Featured Business 2 Household Goods

Professional Makeup Mirror Developed with Patented Technology and Ideas

CEO
HORINOUCI Shigemi



Located in Hirano Ward, Osaka City which has flourished as a town known for its mirrors since ancient times, the company develops, manufactures, and sells highly sensitive mirror products using NAPURE Mirror(patented in Japan), which reflects the skin's natural skin tone. The mirror is capable of reflecting the true skin tones with a transparent, high mirror which removes much iron which is the underlying cause for the skin's dullness, and a special reflective metal that reproduces skin tones more accurately. It is also the mirror of choice for professionals, such as makeup artists and stylists, because it is less affected by light and more capable of accurately identifying skin conditions and skin tones.

The "Makeup Mirror" allows you to change the height of the mirror for makeup application. The "Two Way Folding Mirror" can be folded in two ways to save space. The "Styling Stand Mirror" is convenient for hair coloring and styling, as well as makeup, since the top of the head and nape of the neck, as well as the top, bottom, left and right sides of the face, can be clearly seen. The wide range of items includes the "LED Stand Mirror" with three types of lights and eight levels of brightness and other items that combine high-quality Japanese mirrors made by skilled artisans, stylish design, and functionality that can be adjusted to suit the purpose of use. The new "Maki-e Mirror" is a set of an equal-size mirror and a 3x magnifying mirror, both decorated with ukiyo-e patterns in maki-e lacquer, and is a fusion of Japanese tradition and a makeup mirror.

HORIUCHI MIRROR INDUSTRY CO.,LTD.

[Address] 1-5-11 Nishiwaki, Hirano-ku, Osaka City

[Product name] HORIUCHI MIRROR



▲HP



▲Instagram



▲YouTube



Over glass



Scenery viewed with the naked eye



Clip on glass



Viewing scenery with polarized lenses



Flip up glass

Featured Business 3 Apparel

"Real Sunglasses" that Focus on the Quality of Vision

Support Team Leader
YUKIMOTO Yuji



In Tajima, Osaka, the birthplace of Japanese eyeglass lenses, Talex has more than 85 years of history as a manufacturer specializing in crafting polarized sunglass lenses. All steps in the integrated processes, from raw material preparation to the finished product, are done in-house, with more than 60% of the work done by hand by artisans. A 0.03-millimeter-thick "Zakkou" cut filter, which filters out only light that is harmful to the eyes, is manually inserted between the lenses, changing the composition of the materials according to the weather and humidity.

Talex's polarized lens "True View" is a patented proprietary technology in Japan, that blocks 70% of direct light and over 99% of reflected light and ultraviolet rays from road surfaces and water surfaces, while allowing the wearer to discern the color of objects as well as with the naked eye. Joint research with universities has demonstrated the "True View" lenses to have the fatigue reduction effect, in addition to the outdoor scene, such as sports and fishing, they have been accepted by railroad and bus operators nationwide that support safe operation and fatigue reduction for drivers in recent years. There are different types of frames: "Over glass" that can be worn over eyeglasses; "Clip on glass" that can be attached to regular eyeglasses; and "Flip up glass" that make it easy to flip up the lenses. Experience our true sunglasses that continue to improve the lenses and parts for customers' needs.

TALEX Co.,Ltd.

[Address] 4-4-38 Tajima, Ikuno-ku, Osaka City

[Product name] "Performance" Series



▲HP



▲Instagram



▲YouTube



OMOSHIROI BLOCK「Osaka Castle」



OMOSHIROI BLOCK「Takoyaki」



OMOSHIROI CALENDAR DAILY「World Travel -Blue-」



OMOSHIROI CALENDAR MONTHLY「2024 Seasonal Flowers」

Featured Business 4

Stationery

Planning x Design x Manufacturing Give Shape to "OMOSHIROI"

President / CEO
HORIGUCHI Hideto



The "OMOSHIROI SERIES" lineup, which features beautiful designs that are created by tearing off pieces of colored paper with different cuts on each piece, creating elaborate paper art, includes block memos, calendars, and message cards. In addition to being practical, it is a masterpiece that will engross you with the surprise and thrill of its gradually appearing three dimensions and scenes as you use it. The series is developed by TRIAD, a total design company, that was thrust into the limelight as a professional in architectural model making after winning in a TV program. Utilizing the precision technical capabilities of model making and flexible conceptualization, they consistently produce planning, development, prototype manufacturing, product production, package design, and sales promotion tools in-house. The first product, "OMOSHIROI BLOCK," attracted attention on SNS as soon as it was released and became so popular that production could not keep up. Products featuring landmarks such as Osaka Castle and the Osaka Aquarium KAIYUKAN, cityscapes of Kyoto, ukiyo-e and other pictorial works, and cultural assets selected as Japanese heritage sites have been featured in numerous collaborations with companies, characters, museums, and facilities, and have been featured in numerous foreign media such as "Euro News," "Japan Times," and "Jstyle". They are increasingly attracting attention as souvenirs that not only bring back memories of your travels but also allow you to experience the power of Japanese artisanship (monozukuri).

TRIAD Inc.

[Address] 2-18-25 Mitejima, Nishiyodogawa-ku, Osaka City

[Product name] "OMOSHIROI SERIES"



▲HP



▲Instagram



▲YouTube



tape recorder



2024 mini jet



wakka



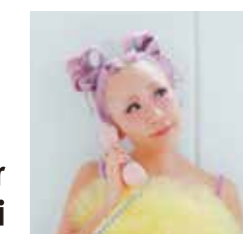
oekaki house

Featured Business 5

Hobby

Designing Wooden Toys that are Exciting for Children and Relaxing for Adults

CEO・
creative director
Kaz* Shiomi



Since our establishment in 2007, when wooden toys were mainly primary colors, such as blue and red, we have been creating and disseminating visually fun and stylish wooden toys that both adults and children can enjoy playing with, not only in Japan, but also in Europe, the U.S., Asia, Oceania, and other countries. To date, we have manufactured more than 100 types of toys! Since 2011, our company has exhibited twice a year at Maison et Objet in Paris, one of Europe's largest interior design trade fairs, and collaborates with various domestic and international brands such as Air France, LANVIN PARIS, and the famous Parisian children's wear brand Bonpoint. The "kiko+&gg*" wooden toys have an appealing design and coloring, with the smooth feel of high-quality beech wood. These toys meet global safety standards such as ASTM and CE EN71 and are safe to touch and play with. While the colorful and bright style created by Kaz* Shiomi is attracting attention, the brand also emphasizes toys that are functional and not "just objects," such as a wooden drawing board and water games that make even adults nostalgic, a tape recorder that can record audio, a dial telephone that returns change, and a toy that can be used as a teether for babies. We deliver toys that bring smiles as a communication tool for children and families.

Kukkia Co.,Ltd.

[Address] #901 1-14-24 Kyomachibori, Nishi-ku, Osaka City

[Product name] wooden toys from "kiko+ & gg*"



▲HP



▲Instagram



▲YouTube



Takeguchi.Co.,Ltd.

Tradition



▲HP

▲Instagram

[Address] 2-2-14 Ikunohigashi,Ikuno-ku,Osaka City
[Product name] **Yuzen Leather**

"Yuzen", a traditional Japanese kimono dyeing technique has been transformed into a technique to apply it to leather, making it possible to express unique "bumps" on the surface. Depending on the shape of the "bumps" and the degree of shrinkage or their shapes, leather will look different. All processes are done by hand; therefore, no two pieces are the same in terms of patterns and colors. Soft and smooth leather is created into bags or small pouches. It is also washable, making it the perfect material for shirts and jackets.



Atex Co., Ltd.

Household Goods



▲HP

▲X

▲YouTube

[Address] 3-3-24 Nagayoshikawanabe,Hirano-ku,
Osaka City

[Product name] **LOURDES GUN**

A body care device with high-speed vibration for the entire body from the scalp to the feet. The main body is light at only 220g and is easy to care for. 4 adjustable vibration settings ranging from 800-3200 times with changeable adjustments according to the care area, such as the scalp or on a surface. Using the special attachable arm allows you to care for hard-to-reach areas such as your back and hips.



Life on Products, Inc.

Household Goods



▲HP

▲Instagram

▲YouTube

[Address] 2F Yotsubashi Star Bldg. 1-12-19
Minamihorie, Nishi-ku, Osaka City
[Product name] **Life on Products
Cordless electric brush**

A cordless, electric cleaning brush that cleans sinks and water areas easily. Comes with 2 types of brushes and 3 types of pads for scraping and polishing to be able to clean everywhere. Clean and tidy the kitchen, washrooms, bathrooms, toilets, and other areas that used to be difficult to clean by hand will now be perfectly clean. Use the optional 360-degree brush to clean the bottom and the inside of stainless-steel bottles and even the inside of shoes.



Nippon Seal Co.,Ltd.

Household Goods



▲HP

▲X

▲Instagram

[Address] 1-3-65 Hirabayashiminami,Suminoe-ku,
Osaka City

[Product name] **BEST TORESSER**

Since its launch in 1959, the "Etiquette Brush" for clothes has been widely used throughout the world. Dust removed by brushing is automatically stored inside an internal pocket by simply sliding the switch left and right. After use, simply slide the top lid to the side and discard the contents into the trash for repeated use. This is a certified "Made in Osaka Brand" product.



OSK Corporation.

Household Goods



▲HP

▲Instagram

▲YouTube

[Address] 8-9-29 Imagawa, Higashisumiyoshi-ku,
Osaka City

[Product name] **"hinokinopla" lunch series**

An eco-friendly lunch box set using cypress wood powder blended with plastic. It recycles wood waste resulting from the manufacturing process of wood products. It is characterized by a naturally-derived antibacterial effect and a subtle scent of Japanese cypress. It consists of an array of 5 items, including chopsticks, a lunchbox, and food containers. Popular among women who are eco-friendly and like stylish lunch boxes.



Sensyo Co., Ltd.

Household Goods



▲HP

▲Instagram

[Address] 5-2-64 Minamitsumori, Nishinari-ku, Osaka City
[Product name] **Pure Titanium Straw**

Sustainable straws that maximize the characteristics of titanium. They give an air of luxury from the unique quality of the metal and the beautiful tone that is drawn out from our proprietary titanium processing technology. Since titanium is tasteless and odorless, you can enjoy the drink itself. Being light, durable, and rust-resistant, the straw is easy to clean. We expect that each titanium straw will be one step for protecting the Earth, you, and your loved ones.



SHINSAI KATO Co.,Ltd.

Household Goods



▲HP

▲Instagram

[Address] 5-8 Yamazakicho, Kita-ku, Osaka City
[Product name] **Jumokufu&Forest Mist from
"Engi no Ito"**

We manufacture and sell the "Jumokufu(Tree Cloth)" series, fabric products such as clothing, sundries, and interior goods made by spinning wood fibers of trees from various regions of Japan, and the "Forest Mist" series, aroma products made from essences extracted from mountain flowers, plants, and trees. The trees that used as raw materials are thinned wood from Mt. Fuji, fallen trees from Mt. Koya, and precious wood scraps from Yoshinoyama to create new forms of life.



TATAMISER Co., Ltd.

Household Goods



▲HP

▲Instagram

[Address] 10F ITM ATC Bldg. 2-1-10 Nankokita,
Suminoe-ku, Osaka City

[Product name] **TATAMIMAT**

Tatami mats that can be laid anywhere in the home. The back of the tatami mat has a non-slip surface which prevents any movement even if it is placed on the hard floor. Tatami mats made with new material using resin and Japanese paper on the surface are available in a variety of colors with high durability and can be used in the interior of a Western-style house without being out of place. Many styles of square-shaped, without tatami edges called Ryukyu Tatami, are also available. The length, width, and thickness of all tatami mats can be customized.



TERAMOTO CORPORATION LTD.

Household Goods



▲HP

▲Instagram

[Address] 3-5-29 Itachibori, Nishi-ku, Osaka City
[Product name] **OPPO quack series**

The "OPPO quack" is a muzzle that prevents (mainly dogs) from picking up foods and biting. Shaping it like a charming beak makes it easy to use. Since it is made of soft silicone, the discomfort and stress are reduced for pets wearing it. "OPPO quack closed" for salons prevents biting during nail clipping and shampooing. "OPPO quack face" is recommended for dogs with short noses and cats.



Carrot Company Co., Ltd.

Apparel



▲HP

▲Instagram

▲X

[Address] 2F 3-5-11 Minamisemba, Chuo-ku,
Osaka City

[Product name] **anello RETRO
"KUCHIGANE" BACKPACK**

A series of anello "KUCHIGANE backpacks" made of faux leather material. The bags open widely, allowing easy visibility and access to the contents inside. They feature a soft and smooth touch with a retro-like design, along with practical features such as a security pocket on the back and a carry-on belt. The company began selling products overseas, mainly in Asia in 2016, and currently, they are expanding their sales channels to the Middle East, Europe, and the U.S.



MSPC CO., LTD.

Apparel

[Address] 2F 3-2-13 Bingomachi, Chuo-ku, Osaka City

[Product name] potential 2WAY BackPack



▲HP



▲Instagram



▲YouTube

A 2-way backpack with a solid design and updated functionality for use in the city. Side handles for use as a briefcase. Fabric with superior durability and fastness has a water-repellent surface and waterproof on the back and equipped with an original "m-strap" shoulder strap to reduce the burden caused by the luggage's weight.



Regeta Co., Ltd.

Apparel

[Address] 1-9-24 Tatsuminishi, Ikuno-ku, Osaka City

[Product name] RegettaCanoe (Big foot 3 strap design)



▲HP



▲Instagram



▲YouTube

Features a unique insole and outsole designed to be "easy to wear, easy to walk, and fatigue-resistant". With the rounded tops, which do not constrict the toes, make a trinity (insole, outsole, and the top) for a comfortable walking experience. More than 9.5 million pairs produced with a shape that is easy to wear with a playful design, perfect for walking around town. We have many repeat customers of all ages and genders.



SANKEI MERIYASU CO.,LTD.

Apparel

[Address] 2-3-28 Nakazakinishi, Kita-ku, Osaka City

[Product name] EIJI



▲HP



▲Instagram

Developed the plain T-shirt in the pursuit of the highest quality, and comfortable wear. Using 100% Ultimate Pima, the world's highest quality organic cotton, together the combined skills of Osaka artisans in all processes from making thread to sewing. Smooth to the touch and soft, light, and comfortable to wear; the more you wear it, the more it melts into your skin. All products come with a lifetime warranty and full after-sales support. Custom-made products are also available.



LIHIT LAB.,INC.

Stationery

[Address] 1-1-22 Nonimbashi, Chuo-ku, Osaka City

[Product name] PuniLabo Stand Pen Case



▲HP



▲Instagram

Silicon pen case with cute animal designs such as bears, dogs, and cats. With the zipper open, press the main body, and the body is pushed into the main body, flattening it, to make an upright pen stand at your desk. It can hold 15 pens, with space for an eraser holder on the lid.



OGURI Corporation

Stationery

[Address] 3-15-7 Tatsumikita, Ikuno-ku, Osaka City

[Product name] mahora



▲HP



▲X



▲Instagram

"Mahora" notebook, born from the voices of people with developmental disabilities, features "easy-to-read paper that reduces light reflection on the eyes", "borders that are easy to identify", and "simple design". On the border pages, colored paper is used to reduce glare. Lines are easy to identify with "thick and thin" alternating horizontal borders printed alternately and "shaded borders" to identify the lines. At a glance, a simple notebook packed with easy-to-use artisanship.



Teranishi Chemical Industry Co., Ltd.

Stationery

[Address] 2-13-11 Ikue, Asahi-ku, Osaka City

[Product name] MAGIC INK



▲HP



▲X



▲Instagram

Oil-based markers were first developed and launched in Japan in 1953. MAGIC INK, with its superior quick-drying and water-resistant properties, can be used to write on paper, cloth, leather, cardboard, wood, metal, ceramics, glass, and plastic, and can be used in a wide range of applications in offices, schools, factories, and homes. The eco-friendly construction which permits ink refilling and nib replacement won the Good Design・Long Life Design Award in 2008.

※ "MAGIC" and "MAGIC INK" are trademarks or registered trademarks of Uchida Yoko Co., Ltd.



CATEYE CO.,LTD

Hobby

[Address] 2-8-25 Kuwazu, Higashisumiyoshi-ku, Osaka City

[Product name] AMPP900



▲HP



▲Instagram



▲Facebook

A rechargeable headlight for bicycles with a maximum brightness of 900 lumens and a USB Type-C terminal for easy insertion and removal. It has an aluminum body with superior heat dissipation, withstands hard use, and comes with a 3-stage battery indicator that shows the remaining battery level. Lights up in five patterns, high, middle, low, daytime hyper constant, and flashing. Include brackets for easy installation.



LOGOS CORPORATION

Hobby

[Address] 2-11-1 Hirabayashiminami, Suminoe-ku, Osaka City

[Product name] Tradcanvas Floating Hammock Chair



▲HP



▲Instagram



▲Facebook

A hammock chair with a new reclining function from the outdoor brand "LOGOS". It sways comfortably and is ideal for relaxing while camping. It offers a 2-way use as a hammock and a chair, with an easily adjustable angle for a backrest with a belt. Comes with a headrest and drink holder. Assembly design allows slim storage and easy transportation.



COGIT CORPORATION

Cosmetic/Beauty

[Address] 1-12-20 Nishihommachi, Nishi-ku, Osaka City

[Product name] HADA method retinol CREAM



▲HP



▲Instagram



▲X

Retinol body cream made in Japan with a proprietary Japanese formula. It also contains a combination of Centella Asiatica and an extract of Houttuynia cordata, ancient Japanese plant ingredients. Moisturizing effect for smooth skin. This skincare item is easy to use in your busy daily life, blends well with your skin, and gives you a sense of relaxation. With its floral woody scent, use it as a night care product every day for a feeling of enchantment.



TAKARA BELMONT CORPORATION

Cosmetic/Beauty

[Address] 2-1-1 Higashishinsaibashi, Chuo-ku, Osaka City

[Product name] YUME NOBLE



▲HP



▲Instagram

Shampoo chairs exclusively for salons, such as barbershops and beauty salons. The high-quality leather upholstery and special cushions softly envelop your entire body, providing a comfortable sleep as though you are lying in bed. A neck cushion and head pillow filled with soft gel provide three points of support for the head and comfort for the neck. This is a luxury model that allows customers to relax in comfort.