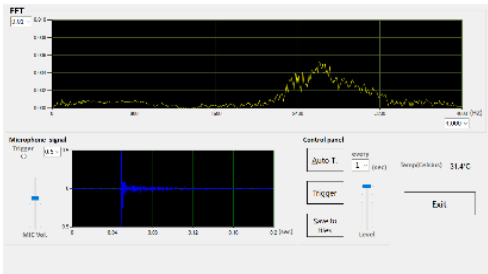


# 1. DFJ CO., LTD.

looking for  
**BUYER**

## 1. Line of Business / Production Items



Operation screen



For Brake Pad



We introduce our abnormality detection devices and disorder alert systems for manufacturers that use AI to issue alerts.

**Main Products:** Detection systems that analyze sounds produced by products or equipment without touching or destroying them, and decide acceptance and/or rejection.

**Main Technology:** To detect defects that are impossible to distinguish from external appearance  
Since our devices analyze and interpret sounds produced by objects to be sorted and/or inspected, they are useful in detecting cracks in various metal components, welding defects, and abnormalities in devices that produce sounds such as press machines.  
With products that have magnetic properties, our devices use electromagnetic pulses to produce sounds without touching or destroying the products, collect the sounds with a microphone, analyze them with AI, and interpret them.  
We are currently developing a system to make our services cloud-accessible.

**Main Customer (industry):** Automobile and electrical industries

## 2. We are looking for...

**BUYER**

Detection systems that analyze sounds produced by products or equipment without touching or destroying them  
【Target Industry】  
Parts manufacturers in the automobile and electrical industries

## 3. Company Profile & Contact Information

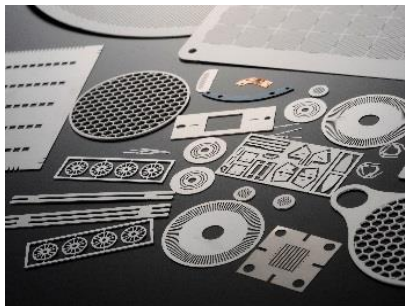
(Japan Head Office)

- Established Year : 2016
- Number of Employees : 5
- Capital (USD) :
- Quality Certificates :
- Person in Charge: : Mr.Shiro HASUI
- Title: : President
- Language: : English, Japanese
- Address: : 2-11, Techno Stage 1, Izumi-shi, Osaka, JAPAN
- TEL: : +81-72-553-2245
- FAX: : +81-72-553-1170
- E-mail: : hasuiy@dfinder.work
- Website: : (JP) <https://dfjapan.blogspot.com/>  
: (EN) <https://dfjen.blogspot.com/>

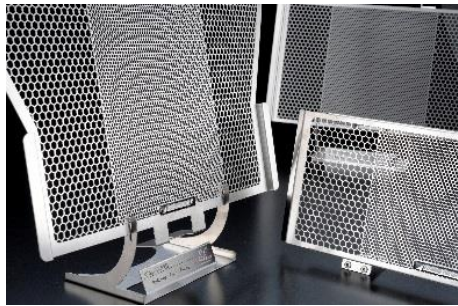
## 2. FUJI SEIMITSU KOGYO CO., LTD.

looking for  
**BUYER**

### 1. Line of Business / Production Items



Electronic parts; Metal mask



Radiator core guard for motorcycle



Sensor parts



Nameplate, Emblem

### Photo Etched and Electroformed Products

We can process hard material without strain and burr. Even silicon steel sheet with insulation films on the surface can be etched into the requested shape, with the accuracy of micron level in a short lead time, without using expensive stamping tools. As we can meet various needs from prototype to full production up to millions, our products are widely used in semiconductor, electronics, medical devices, automotive parts, and machine tools, etc.

**Main Products:** Precision metallic work, Electronic Parts, Optical sensor parts and metal masks for vapor deposition, Radiator Core Guard for motorcycle

**Main Technology:** Photo Etching and Electroforming Process, Precision Sheet Metal Working, Printing, and Plating

**Main Customer (industry):** Automotive, Medical, Biotechnology, Sensor, Universities, Research Institutions, etc.

### 2. We are looking for...

**BUYER**

Precision Processed Thin Plate Products with Photo Etching Technology ( $t < 1.0\text{mm}$ )

**【Target Industry】**

Manufacturers of home electronic appliances, car parts, medical biotechnology, optical equipment, and companies that develop organic EL devices, etc.

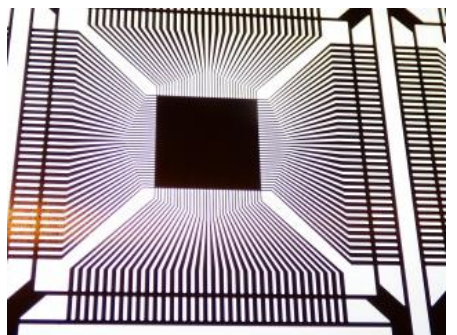
### 3. Company Profile & Contact Information

(FUJI SEIMITSU KOGYO CO., LTD./Japan Head Office)

- Established Year : 1974
- Number of Employees : 10
- Capital (USD) : 100,000 (USD)
- Quality Certificates :
- Person in Charge: : Mr.Daiki Keiraku
- Title: : Technical Director
- Language: : English
- Address: : 3-22-32, Kanaoka, Higashiosaka-shi, Osaka, JAPAN
- TEL: : +81-6-6721-1509
- FAX: : +81-6-6727-6082
- E-mail: : fujita@web-fuji.com
- Website: : (JP) <http://www.web-fuji.com>



Photo Etching Parts



Typical Application



Laser photoplotter



Precision bender



Industrial inkjet printer



Burring

### 3. GENECH CORPORATION GENECH (Thailand) CO., LTD.

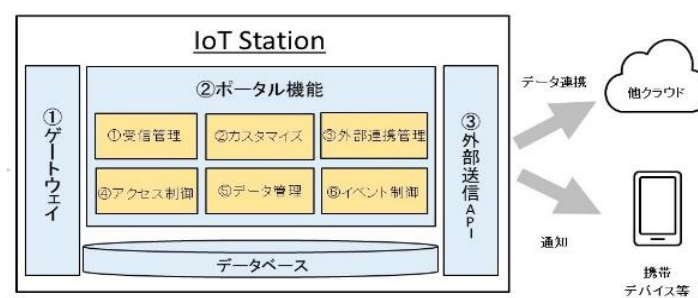
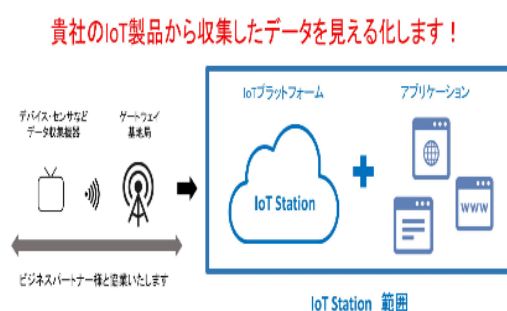
TH

looking for  
**BUYER/Partnership**

## 1. Line of Business / Production Items



IoT Station



**Main Products:** IoT platform "IoT Station"

**Main Technology:**

(1) Any ideas are embodied based on the IoT concept to provide IoT solutions.

[Example] The operation status of production lines is monitored at real time. Any abnormalities are informed through e-mail messages or applications.

(2) Quality control data are stored in high-capacity cloud storage systems to realize paperless management.

[Example] In addition to space saving and safe data management, real-time check of quality control data is possible by using information terminal devices.

**Main Customer (industry):** manufacturers, service industry

## 2. We are looking for...

### BUYER

IoT platform "IoT Station"

Our "IoT Station" is accessible via any circuit regardless of telecommunications standards, from mobile to LPWA communications.

Since IoT Station comes with cloud services, all users need to do is simply prepare themselves with devices such as sensors to obtain data to realize IoT, save data, and manage the obtained data through their sensors by organizing them into graphs or lists via our company's IoT Station.

#### 【Target Industry】

Japanese companies doing business overseas (regardless of business category), sensor and device manufacturers

Although our company currently specializes in and is good at providing IoT and visualization services to companies in the manufacturing, medical, and agricultural industries, we are able to respond to the needs of various types of companies for improving their business operations in various ways.

### PARTNERSHIP

sensors and devices × IoT solutions

Our company is interested in proposing IoT solutions for problems faced by various companies by combining sensors and devices sold in Thailand with our company's IoT platform IoT Station (e.g. developing monthly sum services).

■Examples of incorporating IoT: Personnel management system, and FA control

#### 【Target Industry】

Sensor manufacturers, and device manufacturers in general

## 3. Company Profile & Contact Information

(GENECH CORPORATION/Japan Head Office)

■Established Year : 1992  
 ■Number of Employees : 240  
 ■Capital (USD) : 516,000(USD)  
 ■Quality Certificates :  
 ■Person in Charge : Ms. Mai Ito  
 ■Title : Executive Administrative Assistant  
 ■Language : English, Japanese  
 ■Address : 552, Nijyoden-cho, Karasuma St., Oike, Nakagyo-ku, Kyoto-shi, KYOTO, JAPAN  
 ■TEL : +81-75-211-5533  
 ■FAX : +81-75-213-2678  
 ■E-mail : contact\_thai@genech.net  
 ■Website : (JP) <http://www.genech.co.jp>  
 : (EN) <http://en.genech.co.jp>

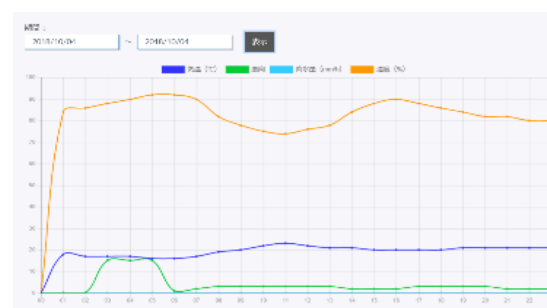
(GENECH (Thailand) CO., LTD./Thai Head Office)

■Established Year : 2019  
 ■Number of Employees : 3  
 ■Capital (USD) : 62,000(USD)  
 ■Quality Certificates :  
 ■Person in Charge : Ms. Orawan Kammee  
 ■Title : Sales  
 ■Language : Thai, English, Japanese  
 ■Address : 952 Ramaland Building 13 Fl., Rama 4 Rd., Suriyawongse, Bangkok 10500, THAILAND  
 ■TEL : +66-2-235-8901  
 ■FAX : +66-2-235-8903  
 ■E-mail : contact\_thai@genech.net  
 ■Website : (JP) <https://th.genech.net/index.php>

Supports various communication standards and devices



Operation monitoring ·MAP display



Information visualization



# 4. KYOEI CONTROLS CO., LTD.

looking for  
**SUPPLIER/PARTNERSHIP**

## 1. Line of Business / Production Items



Filter structure



Factory



Ultraviolet light irradiation equipment

### Our Cilia MZ filter even makes river water drinkable!

**Main Products:** Cilia MZ Technology filter set (PP filter + plastic filter + activated carbon filter + Cilia MZ filter)

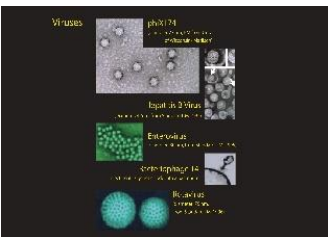
**Main Technology:** A 4-stage filtration system for effectively inactivating bacteria and viruses



NSF certification

- (1) Polypropylene fiber filter (10 μ): Removes impurities (gravel, mud, suspended solids, iron rust, and dust) from water
- (2) Plastic filter: Softens water by removing heavy metals
- (3) Activated carbon filter: Deodorizes water and removes chlorine
- (4) Cilia MZ filter: Inactivates microorganisms and pathogens

- While it is generally impossible to inactivate viruses only with filters, our Cilia MZ filter uses natural minerals to inactivate viruses and stabilize pH values. Therefore, our 4-stage filtration system equipped with the Cilia MZ filter even makes river water drinkable.
- Our filtration system is certified by NSF International (a sanitation and food safety standardization organization) and also meets WHO (2011) specifications for drinking water quality.



Viruses that can be inactivated

- We filtered water running down gutters in Japan and tested it for 51 items, proving that the filtration system inactivates viruses.
- We performed a simple filtration test on water used for daily purposes in a Thai village, using our 4-stage filtration system and another company's 5-stage filtration system (the water was river water and contained Escherichia coli and other common bacteria). As a result, our 4-stage filtration system inactivated viruses and produced drinkable water. The other company's 5-stage filtration system was unable to inactivate the viruses and could not produce drinkable water. While the number of Escherichia coli bacteria decreased a little, the number of other common bacteria increased (since the filtration system failed to inactivate the viruses, the bacteria likely multiplied inside the filter).

## 2. We are looking for...

### SUPPLIER

Filtration filters, filter housings, faucet connectors  
【Target Industry】 OEM manufacturers producing equivalent products (listed above)

### PARTNERSHIP

Filtration filters, filter housings  
【Target Industry】 Agencies that will buy our products and sell them

## 3. Company Profile & Contact Information

### (KYOEI CONTROLS CO., LTD./Japan Head Office)

■Established Year : 2001  
■Number of Employees : 7  
■Capital (USD) : 100,000(USD)  
■Quality Certificates : ISO9001  
■Person in Charge : Mr. Koichiro KINOSHITA  
■Title : Director  
■Language : Japanese  
■Address : 4-26-5, Fujiwaradai Kita-machi, Kobe, Hyogo, JAPAN  
■TEL : +81-78-984-5123  
■FAX : +81-78-984-5124  
■E-mail : k.kinoshita@kyoei-techno.com  
■Website : (JP) <http://kyoei-techno.com/>  
: (EN) <http://kyoei-techno.com/en/>

### (KYOEI CONTROLS CO., LTD./Thai Representative Office)

■Established Year : 2019  
■Number of Employees : 1  
■Capital (USD) :  
■Quality Certificates :  
■Person in Charge : Mr. Yukio IKEDA  
■Title : Thai Office Director  
■Language : Japanese, Thai  
■Address : 31/8 M.12 Baankad Maesariang Maehongson Thailand 58110  
■TEL : +66-094-072-0674  
■FAX :  
■E-mail : y.ikeda@kyoei-techno.com  
■Website : [www.kyoeicont-th.com](http://www.kyoeicont-th.com)

# 5. NAKA SEIKI CO., LTD.

looking for  
**BUYER/PARTNERSHIP**

## 1. Line of Business / Production Items



Hand press



Impact press



Precision air chuck



Precision air chuck  
(Example of special products supported)

**Main Products:** (1) Hand press, Impact press (2) Precision air chuck

**Main Customer (Industry):** Automobile, light electrical appliance, general electrical machinery, and FA automatic machine manufacturer

### [Hand Press]

We offer an extensive array of small, light, and compactly designed hand presses to choose from based on purpose.

Processed with precision, our hand presses offer high precision and rigidity. They have a simple structure and are maintenance-free.

- Rack and pinion presses: Equipped with a rack gear on the main axis side and a pinion gear on the handle axis side, our rack and pinion presses apply stable thrust throughout the stroke (for thrusts between 1.6 kN and 6.0 kN).
  - Toggle presses: Equipped with a toggle linkage mechanism, our toggle presses produce strong force when their linkage fully extends (for thrusts between 5.0 kN and 22.0 kN).
- <Use applications> Light press-fitting of bearing, press-fitting of small-diameter pin and shaft, drilling of plate materials, bend correction of shaft and pipe, caulking, etc.

### [Precision Air Chuck]

We offer small air chucks with high precision, rigidity, and gripping power for grinding, lathing, and machining workpieces and measuring their runout.

With our diverse products, customers can choose models based on their workpiece types.

Since we conduct the entire production process from designing to manufacturing, we also customize products on request, including forming jaws specially adapted to workpiece shapes.

- Made from special materials and assembled by craftsmen making fine adjustments by sanding, our air chucks feature high fitting and repeatability precision.
- The highest repeatable precision of our air chucks themselves is 0.002 mm. By putting the finishing touches on forming jaws and air chucks at the same time, we can realize turning precisions between 0.01 and 0.03 mm based on master workpiece standards.
- Our air chucks have high centering ability, able to center workpieces just by gripping them.
- While we specialize in small air chucks with diameters between  $\phi 25$  and  $\phi 100$  mm, we have produced air chucks in sizes up to  $\phi 250$  mm on request.
- We produce 2-, 3-, and 4-jaw chucks with jaw strokes between  $\phi 1$  and  $\phi 10$  mm (and have produced air chucks with a maximum jaw stroke of  $\phi 32$  mm).

<Use applications> Grinding, lathe, machining, deflection measuring instrument, etc.

## 2. We are looking for...

### BUYER

(1) Hand press, Impact press (2) Precision air chuck

#### 【Target Industry】

[Hand press] Low voltage, electrical machinery, and transportation equipment manufacturers, and companies that assemble parts in the field; or, companies that manufacture FA equipment machines

[Precision air chuck] Companies that perform metal cutting work or manufacture FA equipment machines

### PARTNERSHIP

(1) Hand press, Impact press (2) Precision air chuck

【Target Industry】 Sales agents that can sell our products (hand press, impact press, precision air chuck)

## 3. Company Profile & Contact Information

(NAKA SEIKI CO., LTD./Japan Head Office)

- Established Year : 1952
- Number of Employees : 180
- Capital (USD) : 200,000(USD)
- Quality Certificates : ISO9001, ISO14001
- Person in Charge: : Mr. Naoki Ujinawa
- Title: : Particular Products Sales Dept.
- Language: : English, Japanese
- Address: : 1-2-17, Kaneda-cho, Moriguchi-shi, Osaka, JAPAN
- TEL: : +81-6-6901-1875
- FAX: : +81-6-6905-8241
- E-mail: : naka-ujinawa@nakaseiki.co.jp
- Website: : (JP) <http://www.nakaseiki.co.jp/>  
: (EN) <http://www.nakaseiki.net/>

### Hand press Application



Press fitting



Cutting



Bending



Punching

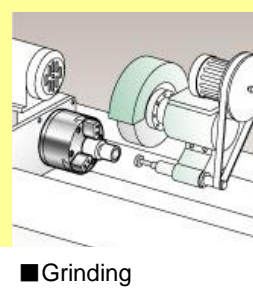


Caulking

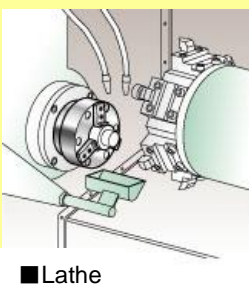


Stamp

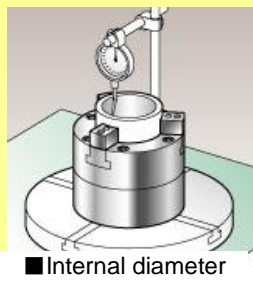
### List of air chuck use examples



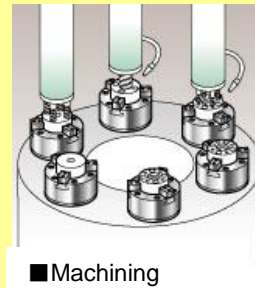
■Grinding



■Lathe



■Internal diameter



■Machining



Factory of Osaka head office



Example of hand press operation



Assembly of air chuck



Factory in Shandong, China



## 6. ORION GIKEN CO., LTD.

### 1. Line of Business / Production Items



▪3DXP100E  
Medical 3D electric swivel mount  
(for Panasonic POVcam only)



▪RC3-JPNC100E  
Medical 3D control unit  
(for Panasonic POVcam only)



▪3DH-S100/E  
Medical 3D electric swivel mount  
(for Sony 4K camera only)



▪RCU-S3000/E  
Medical 3D Control Unit  
(for Sony 4K Camera Only)

Main Products:

Remote electric swivel mount (3D electric swivel mount, joystick controller)

[Product Description]

- Electric swivel mount for a camera for filming and recording surgeries, and its controller  
The swivel mount is usually used by attaching it to an arm of a surgical light head.
- With three rotational axes on the swivel mount, the camera can be adjusted to any angle with the joystick controller.
- The swivel mount is made to work with Panasonic or SONY operative field cameras; the swivel mount can be customized to work with other cameras on request.

Main Technology:

- (1) **Controllable swivel mount can rotate in the same directions shown in the camera image.**  
Control software inside the swivel mount enables the user to control the swivel mount (i.e. adjust the camera angle) to face up, down, left, or right on the coordinate axis shown on the camera image by smoothly rotating the camera on the pan and tilt axes based on the rotational position (roll axis) of the camera.
- (2) **Rotation centering around the camera lens axis**  
Centering around the lens of the camera on the swivel mount, the pan (horizontal), tilt (vertical), and roll (camera rotation) axes rotate.
- (3) **Uses a joystick**  
The joystick enables the user to smoothly control the speed and angle of the swivel mount.
- (4) **Simple pushbutton adjustment moves the swivel mount to preset positions and back to its starting point**  
The swivel mount can be adjusted to positions programmed in advance (preset positions) and back to its starting point simply by pushing a button. Thus, the camera position can be adjusted quickly and accurately.

Main Customer (industry):

Video recordings for medical, manufacturing, and surveillance sites. We want to incorporate our products into operative field imaging systems in hospitals to help transmit live images, provide academic associations with materials, and give explanations to patients and their families.

### 2. We are looking for...

BUYER

Remote electric swivel mount for operative field cameras and operating room cameras  
【Target Industry】  
Hospital equipment installation companies, trading companies, and companies with sales channels to hospitals (both local companies and Japanese companies are welcomed.)

PARTNERSHIP

Companies that install or process medical imaging equipment, systems, or other equipment for operating rooms  
【Target Industry】  
Companies or hospital-related organizations that develop for and/or sell imaging systems to hospitals

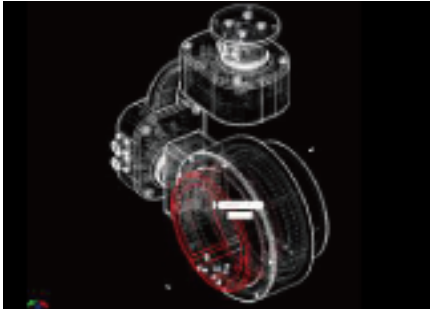
### 3. Company Profile & Contact Information

(ORION GIKEN CO., LTD./Japan Head Office)

■Established Year	: 2010
■Number of Employees	: 6
■Capital (USD)	: 30,000 (USD)
■Quality Certificates	:
■Person in Charge	: Mr.Takanobu HINAGA
■Title	: President
■Language	: English, Japanese
■Address	: Yonezawa Bldg. 3F., 2-37, Suehiro-cho, Kita-ku, Osaka-shi, Osaka, JAPAN
■TEL	: +81-6-6809-5263
■FAX	: +81-6-6809-5267
■E-mail	: info@orion-g.co.jp
■Website	: (JP) <a href="https://www.orion-g.co.jp/">https://www.orion-g.co.jp/</a>



Electronic design



Mechanical design



Processing by the machining center



Assembly/Quality Assurance

# 7. SHINKO HIGH PRECISION MOLD CO., LTD.

looking for  
BUYER/SUPPLIER/PARTNERSHIP

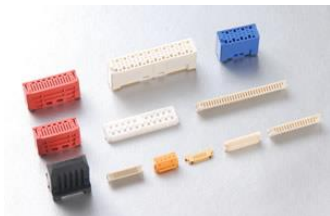
## 1. Line of Business / Production Items



High precision plastic mold



High precision mold parts



Electric connector



Automotive connector

**Main Products:** Contract manufacturing, Design and development / Design and manufacturing of precision molds for precision plastic parts used in automobile and electronic products, precision metal mold parts, and precision plastic parts

**Main Technology:** We want to form a technical partnership with local firms and consign the production of the following products by providing our technical know-how.

**[Possible products for contract manufacturing and sales]**

- Ultraprecision mold components and precision plastic parts (connectors and sensor parts):  
We want local production and sales of ultraprecision parts having a machining accuracy of  $\pm 0.001\text{mm}$ .

- Stationery and medical equipment parts:

**[Required product specifications]**

- High durability: Durable to more than one million shots
- High quality: High precision without fluctuation
- Future expandability to fine component manufacturing

**Main Customer (industry):** Manufacturers (automobile parts or electronic parts), Metal mold manufacturers and parts processing manufacturers

## 2. We are looking for...

BUYER	Metal molds, metal mold parts, and mold technology (technical consulting) 【Target】Manufacturers (automobile parts or electronic parts)
SUPPLIER	Metal molds and metal mold parts 【Target】Metal mold manufacturers and parts processing manufacturers
PARTNERSHIP	Metal molds and metal mold parts 【Target】Metal mold manufacturers that can manufacture products in a continuous process from mold manufacturing to forming and to assembly

## 3. Company Profile & Contact Information

(SHINKO HIGH PRECISION MOLD CO., LTD./Japan Head Office)

■Established Year	: 1966
■Number of Employees	: 5
■Capital (USD)	: 100,000 (USD)
■Quality Certificates	:
■Person in Charge	: Mr. Takao YAMANE
■Title	: President
■Language	: English, Japanese
■Address	: 1-69, Kaminoshima-cho-minami, Yao-shi, Osaka, JAPAN
■TEL	: +81-72-990-6622
■FAX	: +81-72-990-6623
■E-mail	: shinko-mold@nifty.com
■Website	: (JP) <a href="http://www.shinko-seimitsu.co.jp/">http://www.shinko-seimitsu.co.jp/</a>



Affiliated factory in Taiwan



Affiliated factory in China



Affiliated factory in Vietnam



## 8. STUFF CO., LTD

looking for  
**BUYER/SUPPLIER/PARTNERSHIP**

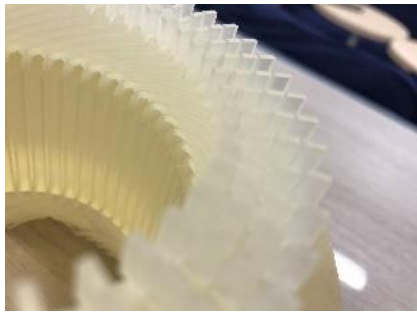
### 1. Line of Business / Production Items



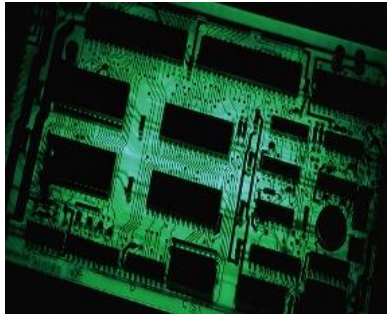
Self-developed product;  
Learning-type IoT alcohol checker



Metal and resin cutting



production and forming  
of prototype mold



Prototype substrate

**Main Products:**

- (1) **Self-developed product:** Learning-type IoT alcohol gadget "TISPY 2"
- (2) **Prototyping:** Prototyping mold development and molding, resin and metal cutting, 3D printing, circuit board development and assembly
- (3) **Development design:** Designing circuits, circuit boards, and mechanisms and developing software for electronic components, industrial equipment, automobile parts, robots, medical equipment, and household goods

**Main Technology:**

Product development + Processing technology  
In addition to supporting our company's product development, our specialists help companies in various industries develop products. We respond to various orders ranging from prototyping to small-lot production of processed metal and plastic products, circuit boards, and plastic products produced with simplified molds. In 2019, we developed new products through open innovation with major Japanese manufacturers within super short delivery periods. Our company has a quality control team that conducts rigorous checks so customers can relax worry-free. We are looking for companies interested in becoming our partner, and look forward to collaborating with your company in taking up new challenges!

**Main customer:**

Electrical equipment, automotive, medical, industrial, equipment, IT, etc

### 2. We are looking for...

**BUYER**

- (1) Learning-type IoT alcohol gadget "TISPY 2" (self-developed product)
  - (2) Our achievements in software development and various design techniques for circuits, circuit boards, and mechanisms
  - (3) Total support from development to prototyping to small lot mass-production in a continuous process
- 【Target Industry】**
- Local Japanese manufacturers that have local subsidiaries in Thailand (automobile parts, medical equipment, and household appliance industry)
  - Able to communicate in Japanese

**SUPPLIER**

- Local processing technology (for resin/metal/rubber material cutting, casting, and metal molds)
- 【Target Industry】**
- Processing, molding, and assembly manufacturers able to respond to small-lot production orders
  - Manufacturers that have business experiences with Japanese manufacturers
  - Companies that have actual achievements in automobile parts, medical equipment, and household appliance industry
  - Able to communicate in Japanese

**PARTNERSHIP**

- (1) Sales of "TISPY 2"
  - (2) New product development in collaboration with local startup companies, combining our technology and their planning and products
- 【Target Industry】**
- Companies having collaboration experience with Japanese companies
  - Experienced product development in the fields of healthcare-related products and devices
  - Startup ventures
  - Companies considering introducing their own products in Japan
  - Able to communicate in Japanese

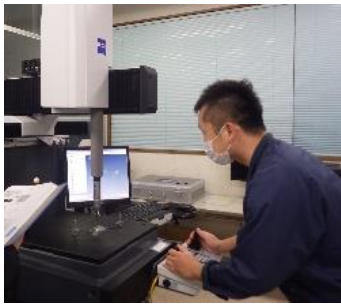
### 3. Company Profile & Contact Information

(STUFF CO., LTD/Japan Head Office)

- Established Year : 1988
- Number of Employees : 57
- Capital (USD) : 150,000(USD)
- Quality Certificates : none
- Person in Charge : Mr.Junpei KOYAMA
- Title : Sales Representative
- Language : English, Japanese
- Address : 8F, 2-12-7, Sonezaki, Kita-ku, Osaka-shi, Osaka, JAPAN
- TEL : +81-6-6366-8100
- FAX : +81-6-6366-8120
- E-mail : [jun-koyama@rd-stuff.com](mailto:jun-koyama@rd-stuff.com)
- Website : (JP) <https://www.rd-stuff.com>



Main Head Office



3D indicator



Injection molding machine



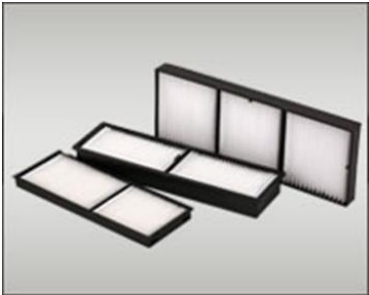
cutting machine



# 9. YUHO CO., LTD.

looking for  
**BUYER/SUPPLIER**

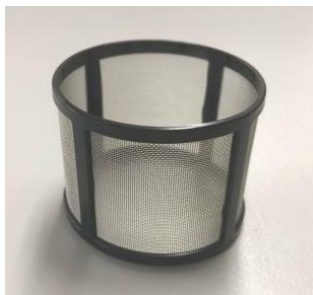
## 1. Line of Business / Production Items



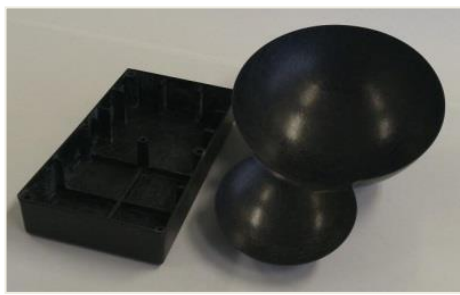
Insert molded non-woven fabrics



Insert molded plastic meshes



Insert molded SUS



CFRP

Our Strength is hybrid molding: a composite technology that combines press molding and insert molding.

We are able to mass produce the same product with the same quality in a short amount of time.

**Main Products:** Non-woven fabrics, filters, and resin molded products (Insert molding and hybrid molding using plastic mesh)

- Main Technology:**
- While many other companies mass produce products with horizontal molding machines designed for automatic manufacturing, we are able to respond to various molding size orders with a large number of vertical molding machines specially designed for insert molding.
  - Our company has the technology for manufacturing non-woven fabrics and filters and is able to conduct integrated production of insert molded products using non-woven fabrics.
  - By undergoing heat press molding and injection molding, hybrid molded products compounded of carbon fiber non-woven fabrics produced with our company's original non-woven fabric manufacturing technology as well as injection molded products can be formed into shapes that non-woven fabrics cannot assume on their own.

**Main Customer (industry):** Automobile parts manufacturers, industrial machinery manufacturers, small equipment manufacturers, machine parts trading companies

## 2. We are looking for...

### BUYER

- (1) Insert molded products such as high performance non-woven fabrics and plastic meshes
- (2) HAYATE (carbon fiber non-woven fabrics using thermoplastic resin fiber)

#### 【Target Industry】

- Automobile parts manufacturers (including Japanese companies in the local region)
- Industrial machinery manufacturers (including Japanese companies in the local region)
- Small equipment manufacturers (including Japanese companies in the local region)
- Machine parts trading companies

### SUPPLIER

Injection molding resins, plastic bags, cardboard boxes, polyurethane foam, and release agents

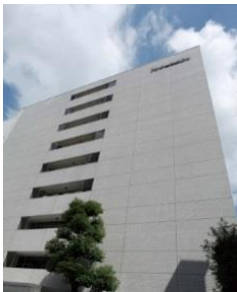
#### 【Target Industry】

- Manufacturers and trading companies of rubber and polyurethane, molding resins, and packaging materials

## 3. Company Profile & Contact Information

(YUHO CO., LTD./Japan Head Office)

- Established Year : 1892
- Number of Employees : 250
- Capital (USD) : 4,100,000(USD)
- Quality Certificates : ISO9001
- Person in Charge : Mr. Satoshi TAKASE
- Title : Injection Molding Dept.
- Language : English, Japanese
- Address : Fujita Toyobo Bldg. 7F, 2-1-16, Dojima, Kita-ku, Osaka-shi, Osaka, JAPAN
- TEL : +81-6-6348-4317
- FAX : +81-6-6348-4309
- E-mail : stakase@yuho.toyobo.co.jp
- Website : (JP) <http://www.yuho.toyobo.co.jp>



Head Office



Fukuyama Factory



Automation equipment



Injection molding