

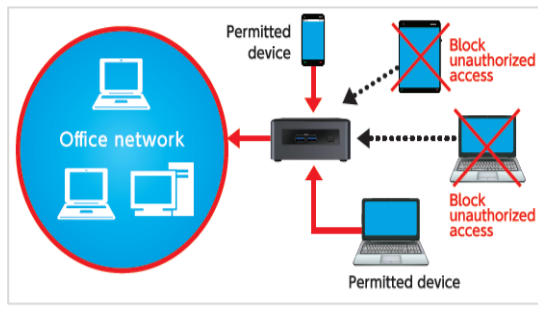
# 1. ACTWORKS CO., LTD

looking for  
**BUYER/PARTNERSHP**

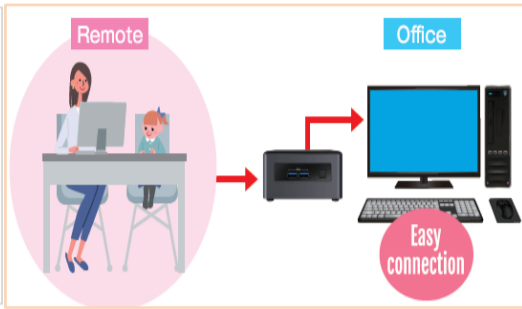
## 1. Line of Business / Production Items



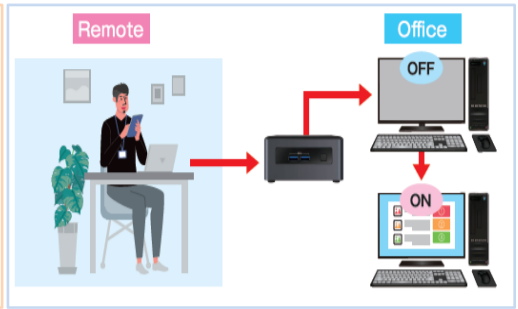
Manage Cube Series



Manage Cube IP Guard



Manage Cube PC Remote



Manage Cube Wake on Lan

It is expected that more and more computer systems will be monitored and operated remotely and that it will be essential to put in place security measures that protect wireless LANs and sensor devices more strongly.

Security arrangements can easily be put in place just by connecting the ManageCube to your network- with the ManageCube, you will not need in-house IT specialists, and can expect reduction in the costs required for the maintenance of your company's systems.

**Main Products:**

ManageCube Series

**[3 Functions of Manage Cube]**

- (1) Manage Cube IP Guard: appliance for detection and blocking of unauthorized devices
- (2) Manage Cube PC Remote: appliance to connect to office computers by remote access
- (3) Manage Cube Wake on Lan Start-UP

You can externally turn a PC in a company on/off and save power and energy (Some PCs may not be supported).

**Main Technology:**

We reduced the equipment cost by simplifying its function. The products dedicated to each function, such as detection and control of unauthorized access to intracompany network, remote access to intracompany network from outside, and external power activation of terminals located in a company, are available. An easy-to-operate screen allows the maintenance by non-IT specialists.

**Main Customer:**

Manufacturers, dealers, and IT system vendors that deal with industrial equipment and machinery used at factories

## 2. We are looking for...

**BUYER**

ManageCube Series

- (1) Appliance for detection and blocking of unauthorized devices
- (2) Appliance to connect to office computers by remote

**■Companies we desire to talk with:**

Manufacturers, dealers, and IT system vendors that deal with industrial equipment and machinery used at factories

**PARTNERSHP**

ManageCube Series

- (1) Appliance for detection and blocking of unauthorized devices
- (2) Appliance to connect to office computers by remote

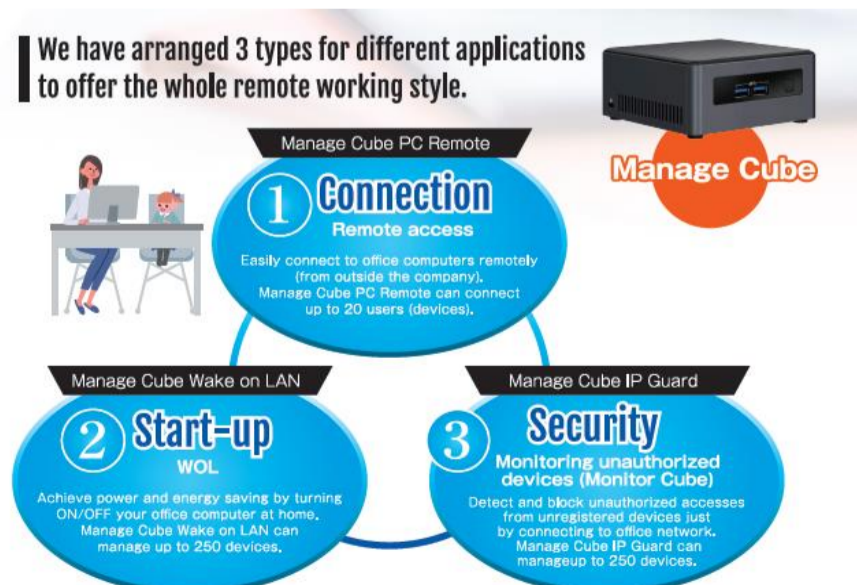
**■Companies we desire to talk with:**

Manufacturers, dealers, and IT system vendors that deal with industrial equipment and machinery used at factories

## 3. Company Profile & Contact Information

**(ACTWORKS CO., LTD./Japan Head Office)**

- Established Year : 2001
- Number of Employees : 5
- Capital (USD) : 30,000
- Quality Certificates :
- Person in Charge : Koji MURABAYASHI (Mr.)
- Title : President
- Language : English, Japanese
- Address : Tamai Bldg. 4F, 1-6-25, Utsubo-hommachi, Nishi-ku, Osaka-shi, Osaka, 550-0004, JAPAN
- TEL : +81-6-6444-2550
- FAX : +81-6-6444-2560
- E-mail : info@actworks.ne.jp
- Website : (JP) http://www.actworks.ne.jp/



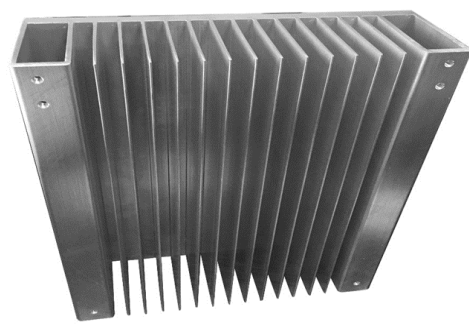
## 2. FUJI ELECTRIC INDUSTRIES CO., LTD.

looking for  
**SUPPLIER/PARTNERSHIP**

### 1. Line of Business / Production Items



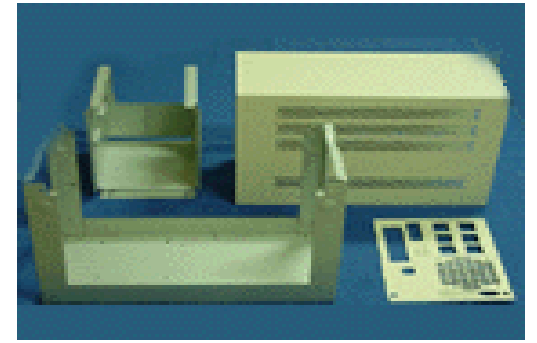
Heatsink



Heatsink



Aluminum die cast



Sheet metal

**Main Products:** Metal products, electronic parts, and equipment products

**Main Technology:** Doing business with many Japanese companies

**Main Customer (Industry):** Electric industry (industrial equipment, consumer equipment, and new energy equipment)

### 2. We are looking for...

#### SUPPLIER

(1)aluminum extrusion heatsink: customizable extrusion type (extrusion width of approx. 50 cm maximum), compatible with anodic oxide coating.

(2)aluminum die cast products: casting of 3000t; Manufacturers that can deal with powder coating and anodic oxide coating processes are

(3)motors/pumps (4)plastic resin molded products

(5)sheet metal: product frame size of approx. 60 x 60 cm at maximum (press, deep drawing (desired oil pressure of 300 T or more), welding, assembly and machining), integrated coating system desired.

(6)OEM/ODM/EMS for (1) to (5)

#### ■Companies we desire to talk with:

Manufacturer that can deal with the following requests;

- Manufacturers that can take flexible measures for the quality assurance that Japanese companies require.
- Measure for environmental reference materials (essential)
- Flexible measures can be taken for due dates.
- With experience with a Japanese company
- Use of Japanese (desired)
- Measures can be taken for analysis and inspection of defective products and for reports (in English or Japanese)
- Customer: Panasonic Corp., OMRON Corp., NICHICON Corp., industrial equipment makers

#### PARTNERSHIP

To develop or provide products/services of the targeted industrial sectors in the "Thailand 4.0" economic model listed below We are interested in jointly developing or providing any products/services—regardless of whether they are components, semi-finished products, or fully finished products—as long as they are products/services in the below-listed sectors in "Thailand 4.0" strategy.

Products/services of the sectors that we are interested in jointly developing/providing are as follows:

(1) medical/health tourism, (2) agriculture & biotechnology, (3) future foods, (4) robotics, (5) aviation & logistics, (6) digital industry & medical hubs.

#### ■Companies we desire to talk with:

companies with experience with a Japanese company, and Japanese speaking staff members, companies which have/will have their bases in Japan.

### 3. Company Profile & Contact Information

#### (FUJI ELECTRIC INDUSTRIES CO., LTD./Japan Head Office)

|                       |  |
|-----------------------|--|
| ■Established Year     | : 1949   |
| ■Number of Employees  | : 77   |
| ■Capital (USD)        | : 500,000  |
| ■Quality Certificates | : ISO9001, ISO14001  |
| ■Person in Charge     | : Mr. Hiroto HORIE   |
| ■Title                | : Assistant Section Manager, Electronic Devices Dept.  |
| ■Language             | : English, Japanese  |
| ■Address              | : 1-8-2, Edobori, Nishi-ku, Osaka-shi, Osaka   |
| ■TEL                  | : +81-6-6445-5808  |
| ■FAX                  | : +81-6-6443-6776  |
| ■E-mail               | : hhorie@fujidensan.co.jp  |
| ■Website              | : (JP) <a href="http://www.fujidensan.co.jp/">http://www.fujidensan.co.jp/</a><br>(EN) <a href="http://www.fujidensan.co.jp/fds/ehtml/company.html">http://www.fujidensan.co.jp/fds/ehtml/company.html</a> |

#### (Our overseas subsidiary)

##### (USA) FUJI ELECTRIC INDUSTRIES AMERICA, INC.

8755 Aero Drive Suite #322 San Diego, CA 92123 USA  
TEL: +1(858)505-0150 FAX: +1(858)505-0550

##### (Singapore) FUJI ELECTRIC INDUSTRIES (S) PTE. LTD.

629 Aljunied Road, #03-04 Cititech Industrial Building, Singapore 389838  
TEL: +65(6742)7700 FAX: +65(6742)7711

##### (China(Shanghai)) FUJI ELECTRIC INDUSTRIES (S.H.) CO., LTD.

9H-L, Zhao-Feng World Trade Building, NO.369 Jiang-Su Road, Shanghai 200050, China  
TEL: +86(21)5240-1184 FAX: +86(21)5240-0457

##### (China(Dalian)) Dalian Representative Office

Room 905, Rong Tong Building, No73 Liaohed Road,  
Economic Technical Development Zone, Dalian 116600 China  
TEL: +86(411)3921-9911 FAX: +86(411)3921-9922

##### (Thailand) FITT CO.,LTD.

999/23 Moo.15,Tambon Bang Sao Thong, Amphoe Bang Sao Thong,  
Samutprakarn 10540 Thailand  
TEL: +66(2)136-6045 FAX: +66(2)136-6047

##### (Hong Kong) FUJI ELECTRIC INDUSTRIES (H.K.) CO., LTD.

Unit26, on the L1 Floor, Mirror Tower, 61 Mody Road, TST East, Kowloon, Hong Kong  
TEL: +85(2)2368-9373 FAX: +85(2)2368-9708



Osaka Head office



Tottori branch



Saitama branch



Kyoto branch

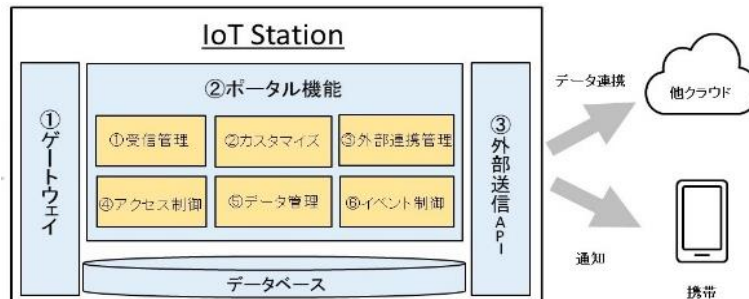
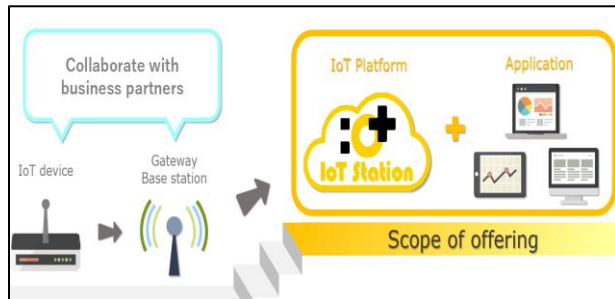
# 3. GENECH CORPORATION GENECH (Thailand) CO., LTD. TH

looking for  
**BUYER/PARTNERSHIP**

## 1. Line of Business / Production Items



IoT Station



IoT One Stop Solution

**Main Products:**  
**Main Technology:**

Internet of Things consultant, data solution, data management on cloud platform

(1) Create online database and dashboard on cloud system to support Internet of Things purpose. Collect data from sensor device or machine status and give IoT solution concept to improve productivity and cost reduction.  
**[Example]** The operation status of production lines, facility safety, energy management can be monitored to see status and trend of data, use these data for analysis or detect unusual situation and send notification through e-mail messages or mobile messenger applications.

(2) Support various device and communication gateway application to connect online database. Reduce cost of internal server/system and IT engineer. Cloud storage is based on high-security world-wide service provider. Customizable data interface for manufacturing, logistics, energy, safety, infrastructure, smart city, smart farm with flexible and cheaper development cost.

**Main Customer (industry):** Manufacturing factory, Utilities service provider, City management

## 2. We are looking for...

### BUYER

Internet of Things consultant, data solution, data management on cloud platform

We provide data monitoring platform for business process (sensor, machine, energy, logistic, safety) with experience from Japan cases. Having Thailand office who can provide support directly, we would like to increase our business awareness to company in Thailand who is interested in Japan technology. Automation is also related to our system.

**■Companies we desire to talk with:**  
 Manufacturing factory, Facility owner, Logistics, Government department, and others also welcome  
 Mainly manufacturing sector or Company who would like to use IT, IOT to monitor process, building, facility, utility, environment according to Thailand 4.0 digitalization policy. Final objectives to increase productivity, reduce manpower/cost/waste, Security and safety function.

### PARTNERSHIP

Sensors and devices × IoT solutions

As we provide mainly online platform and project development, we are looking for partner sensor hardware or system installer who can support installation at site; we would like to collaborate with Thai local system developer, sensor maker, construction company or engineering service to have business/service partnership together.

**■Companies we desire to talk with:**  
 Local sensor manufacturers or Thai system installer for manufacturing factories  
 We would like to contact with local sensor maker or Thai system installer for manufacturing factory, to provide total solution to end customer.

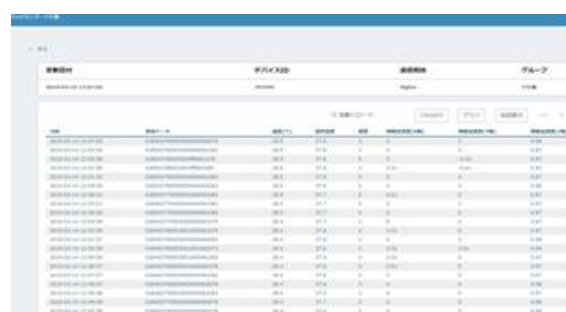
## 3. Company Profile & Contact Information

**(GENECH CORPORATION/Japan Head Office)**

- Established Year : 1992
- Number of Employees : 240
- Capital (USD) : 516,000(USD)
- Quality Certificates :
- Person in Charge : Ms. Mai Ito
- Title : Executive Administrative Assistant
- Language : English, Japanese
- Address : 552, Nijyoden-cho, Karasuma St., Oike, Nakagyo-ku, Kyoto-shi, KYOTO, JAPAN
- TEL : +81-75-211-5533
- FAX : +81-75-213-2678
- E-mail : contact\_thai@genech.net
- Website : (JP) <http://www.genech.co.jp>  
(EN) <http://en.genech.co.jp>

**(GENECH (Thailand) CO., LTD./Thai Head Office)**

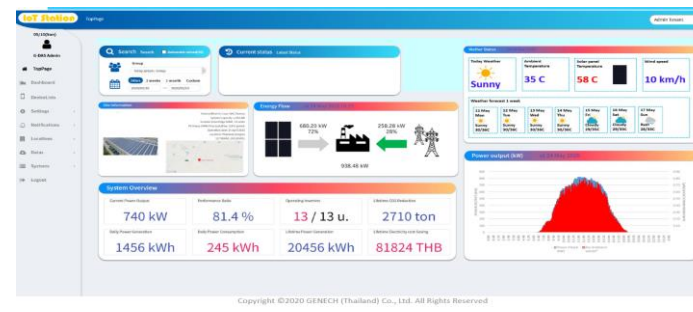
- Established Year : 2019
- Number of Employees : 3
- Capital (USD) : 62,000(USD)
- Quality Certificates :
- Person in Charge : Mr. Arkkapol Dhanarak
- Title : Business Development Manager
- Language : Thai, English, Japanese
- Address : 989 Siam Piwat Tower, 12A floor, Unit B1-B2, Office No. 1241, Rama I Road, Pathumwan, Bangkok 10330, Thailand
- TEL : +66-2-648-5110
- FAX : +66-2-648-5001
- E-mail : contact\_thai@genech.net
- Website : (EN) <https://th.genech.net/>



Supports various communication standards and devices



Operation monitoring - MAP display

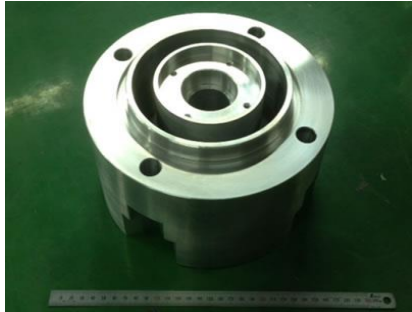


Information visualization

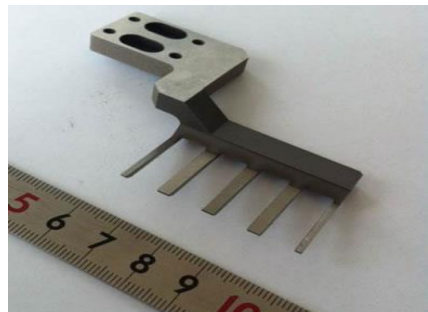
## 4. HANNAKOGYO CO., LTD.

looking for  
**BUYER/SUPPLIER**

### 1. Line of Business / Production Items



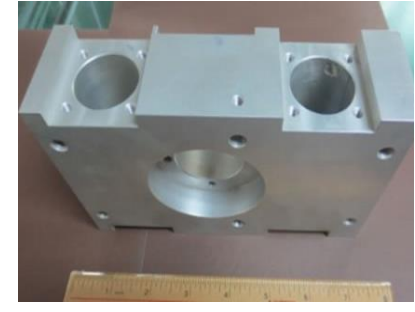
Jig parts for equipment



Conveyor parts



Cam-shaped pins



Pneumatic equipment parts

We offer Japanese quality at reduced costs from our plants in China, where we achieve the quality control same as that in Japan.

We promise that parts are smoothly procured, by undertaking all concerns and problems related to quality and due dates.

Requests for not only mass production but also single part processing are welcomed!!

**Main Products:** Metal-processing parts and precisely machined parts

- (1) Jigs and components required to be accurate to a tolerance of approximately 0.01 mm, used for automobile production lines and semiconductor production equipment
- (2) Components used for press punches
- (3) Components thoroughly controlled by our company, from heat treatment to odd-form processing, surface treatment, and quality control (dimensional and hardness inspection)

**Main Technology:**

- (1) We are capable of processing components under one roof, enabling to supply a wide variety of surface-treated metal, plastic, and special metal components.
- (2) Pre-delivery inspections are performed on all products by our quality control division, so we can deliver overwhelmingly fewer defective products than our industry peers.
- (3) We accept orders for one drawing or product. Overseas delivery (to customers other than those in Japan, and also to construction sites) is available.
  - In our plants in China, we achieve the quality control same as that in Japan. We offer Japanese quality at reduced costs.
  - Undertaking all concerns and problems related to quality and due dates, we will promise that parts are smoothly procured.Requests for not only mass production but also single part processing are welcomed.

**Main Customer (Industry):** FA equipment, air pressure and oil pressure, semiconductor equipment, food machines, other electrical machines, machine manufacturers, etc.

### 2. We are looking for...

**BUYER**

Metal-processing parts and precisely machined parts

**【Target】** Manufacturing-facility manufacturers and FA-related companies

**SUPPLIER**

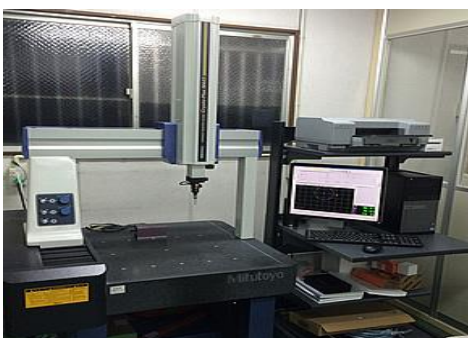
Machining parts, precision machining parts, sheet metal parts, parts for "seikan" processing (sheet metal processing using thick sheets), and rubber parts

**【Target】** Companies that perform metal machining on their own, especially those with expertise in single item processing or those that can deal with heat-treatment and surface treatment at the same time

### 3. Company Profile & Contact Information

(HANNAKOGYO CO., LTD. / Japan Head Office)

- Established Year : 1972
- Number of Employees : 31
- Capital (USD) : 100,000
- Quality Certificates :
- Person in Charge: : Mr. Yoshikazu ISHIKAWA
- Title: : Director
- Language: : English, Japanese
- Address: : 1-7-27 Shimanouchi Higashiosaka-shi,  
Osaka, JAPAN
- TEL: : +81-729-63-0911
- FAX: : +81-729-61-9611
- E-mail: : yoshikazu-ishikawa@hannakogyo.co.jp
- Website: : (JP) <http://www.hannakogyo.co.jp/>  
: (EN) <http://www.hannakogyo.co.jp/en/index.html>



3D measuring instrument



Roundness measuring instrument



Image measuring instrument



X-ray fluorescence analyzers  
(for componential analysis)

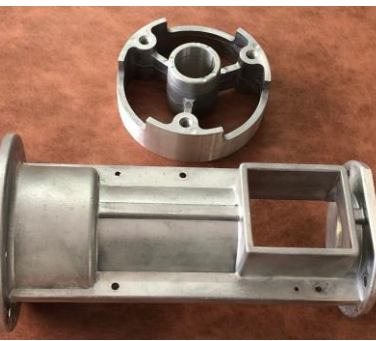
## 5. KOYO ZINC CORPORATION

looking for  
**SUPPLIER**

### 1. Line of Business / Production Items



Recycled zinc ingot



Aluminum die casting products



Zinc die casting products

**We contribute to society by manufacturing zinc metal and die-cast products!**

**Main Products:** Zinc dross (90% zinc), Zinc ingots, die casting products

**Main Technology:** We flexibly, promptly, and appropriately respond to customer requirements.

**Main Customer:** Our customers include manufacturers of galvanized parts, die-cast parts, home appliances, machine tools, etc.

### 2. We are looking for...

#### SUPPLIER

Zinc dross (90% zinc)

**<Product conditions desired>** Need to meet descriptions provided under B1100 of the "B1: Metal and metal-bearing wastes" section of the Basel Convention. (Zinc dross must contain 90% or more zinc.)

**<Amounts to be imported monthly>** Zinc dross will be flat piled in 20-40 ft containers weighing 700-800 kg each.

**■Companies we desire to talk with:**

(1) Galvanizing plants that release zinc dross, (2) metal recycling companies that can procure zinc dross  
(3) specialized trading companies (e.g., trading companies handling scrap metals)

**<Note>** Please note that all such plants/companies must be able to provide zinc dross that satisfies the conditions stated above and that they all must be able to trade zinc dross internationally.

### 3. Company Profile & Contact Information

(KOYO ZINC CORPORATION/Japan Head Office)

- Established Year : 1966
- Number of Employees : 3
- Capital (USD) : 100,000
- Quality Certificates : -
- Person in Charge : Takeshi MORITA (Mr.)
- Title : Managing Director
- Language : English, Japanese
- Address : 3-27-1, Chikko-Shinmachi, Nishi-ku, Sakai-shi,
- TEL : +81-72-244-0161
- FAX : +81-72-245-1609
- E-mail : a.koyo@outlook.jp
- Website : (EN) [https://www.mydome.jp/ibo\\_exporters/detail.cgi?cmpid=cmp003764](https://www.mydome.jp/ibo_exporters/detail.cgi?cmpid=cmp003764)



Head Office/Factory



Die casting products



Zinc dross

## 6. SATSUKI CO., LTD.

looking for  
**BUYER/PARTNERSHP**

### 1. Line of Business / Production Items



Toilet seats with a warm-water shower feature (OEM)

We outsource the production of hot-water washing toilet seats that require high technical capabilities to a Korean home appliance manufacturer. Our technical staff with expertise knowledge control and examine the products on site to ensure high Japanese quality.

#### [Our features/strength of our products]

- (1) A history of about 90 years since our foundation and advanced technical capability based on Japanese standards and quality
- (2) Good track record with major Japanese home appliances manufacturers
- (3) We produce parts and finished products in and outside Japan according to customer's requirements.

|                         |  |
|-------------------------|--|
| <b>Main Products:</b>   | (1) Toilet seats with a warm-water shower feature (2) Interactive flat panel (Electronic blackboards/whiteboards)  |
| <b>Main Technology:</b> | Japanese standards and quality   |
| <b>Main Customer:</b>   | (1) Manufacturers of sanitary ware, housing related manufacturer<br>(2) Companies in the field of education; companies interested in the field of education, ICT; agencies of teaching materials |



Interactive flat panel (Electronic blackboards/whiteboards)

We are addressing educational issues in Japan from various perspectives. As part of our efforts, we focus on sales of highly functional user-friendly electronic blackboards that are adaptable to a wide range of educational settings such as schools and cram schools. We also support companies that are engaged in work style reform by proposing effective use of electronic blackboards in business scenes.



### 2. We are looking for...

#### BUYER

- (1) Toilet seats with a warm-water shower feature (2) Interactive flat panel (Electronic blackboards/whiteboards)

#### ■Companies we desire to talk with:

- (1) manufacturers of sanitary ware, flush toilet, construction/housing equipment; and other companies that are interested in purchasing toilet seats
- (2) companies that are involved with companies in the field of education and/or companies interested in the field of ICT.

#### PARTNERSHIP

- (1) Toilet seats with a warm-water shower feature (2) Interactive flat panel (Electronic blackboards/whiteboards)

#### ■Companies we desire to talk with:

- (1) manufacturers of sanitary ware, flush toilets, and construction/housing equipment, agencies of the such products and materials
- (2) companies in the field of education, agencies of teaching materials

### 3. Company Profile & Contact Information

#### (SATSUKI CO., LTD. /Japan Head Office)

|                       |  |
|-----------------------|--|
| ■Established Year     | : 1931   |
| ■Number of Employees  | : 121  |
| ■Capital (USD)        | : 950,000  |
| ■Quality Certificates | : ISO9001 (at subcontract plants)  |
| ■Person in Charge     | : Mr. Koji MIYAKE  |
| ■Title                | : Assistant Section Manager, Osaka Branch                                |
| ■Language             | : Japanese   |
| ■Address              | : 4-10-29, Minami-semba, Chuo-ku, Osaka-shi,<br>Osaka, JAPAN             |
| ■TEL                  | : +81-6-6252-4751  |
| ■FAX                  | : +81-6-6251-4147  |
| ■E-mail               | : miyake-k@satsuki.co.jp   |
| ■Website              | : (JP) <a href="http://www.satsuki.co.jp/">http://www.satsuki.co.jp/</a> |

#### Cooperation Companies



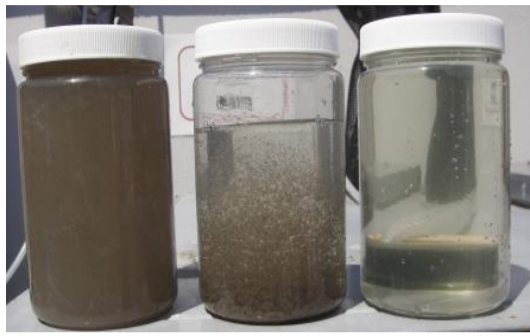
# 7. SUGAKIKAI KOGYO CO.,LTD.

looking for  
**BUYER/PARTNERSHIP**

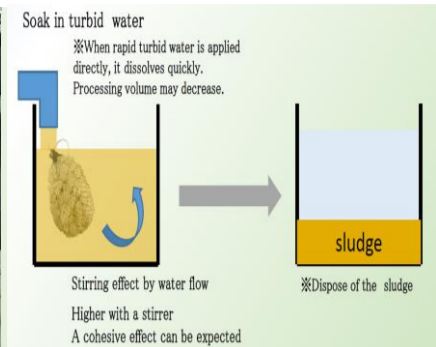
## 1. Line of Business / Production Items



Wastewater treatment equipment "Muddy Water Five"



Turbidity removal tablet



We propose the improvement of the water quality environment in a **SIMPLE** and **INEXPENSIVE** way by providing Japan's proprietary wastewater treatment technology!

**Main Products:**

- (1) 100V compact wastewater treatment equipment "Muddy Water Five"  
Please check our movie ⇒ <https://www.youtube.com/watch?v=Q15bllbKMfY&t=5s>
- (2) simple wastewater purification agent "Turbidity removal tablet" and (3) other water treatment products.  
Please check our movie ⇒ <https://www.youtube.com/watch?v=gksZGwZFING>

**Main Technology:**

We are convinced that this success was made by our efforts and creed to pay sincerity at all times choosing the best products.

**Main Customer:**

General construction industry

## 2. We are looking for...

**BUYER**

- (1) 100V compact wastewater treatment equipment "Muddy Water Five"
  - (2) simple wastewater purification agent "Turbidity removal tablet" and (3) other water treatment products.
- These two products((1)and (2) above) are registered with the Ministry of Land, Infrastructure, Transport and Tourism New Technology (NETIS).
- Companies we desire to talk with:  
Local water treatment companies (developer, sales rep); wastewater treatment/management companies of Industrial Estates; government offices related to water quality management of rivers, lakes, ponds, etc.

**PARTNERSHIP**

- (1) Local selling and rental agencies of 100V compact wastewater treatment equipment "Muddy Water Five"
  - (2) Local selling agencies of simple wastewater purification agent "Turbidity removal tablet"
- Companies we desire to talk with:  
(1) Local selling and rental agencies related to wastewater treatment  
(2) Local selling agencies related to chemicals  
(3) Local OEM of chemicals (for producing our wastewater purification agent)
- In the future, we are thinking of establishing a local manufacturing and sales base if the amount of exports will increase and the cost will match. Therefore, we would like to find local partner companies for suppliers of raw materials, stocking, manufacturing, and sales.

## 3. Company Profile & Contact Information

**(SUGAKIKAI KOGYO CO.,LTD./Japan Head Office)**

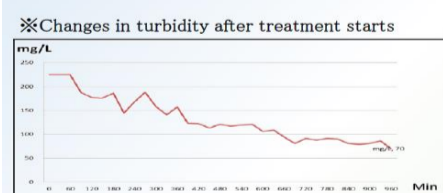
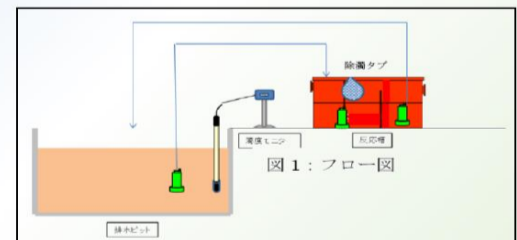
- Established Year : 1924
- Number of Employees : 120
- Capital (USD) : 100,000 (USD)
- Quality Certificates : None
- Person in Charge : Kimihito TAMPO (Mr.)
- Title : Deputy general manager
- Language : English, Japanese, Vietnamese
- Address : 3-9-27, Minami-horie, Nishi-ku, Osaka-shi, Osaka, 550-0015, JAPAN
- TEL : +81-6--6541-7931
- FAX : +81-6-6541-7867
- E-mail : kimihito.tampo@suga-kikai.com
- Website : (EN) <https://www.suga-kikai.co.jp/en/>  
: (JP) <https://www.suga-kikai.co.jp/>

**Muddy water treatment experiment**

【Experiment using a water tank of about 15m3】



Before processing  
Turbidity:766NTU  
pH:7.01



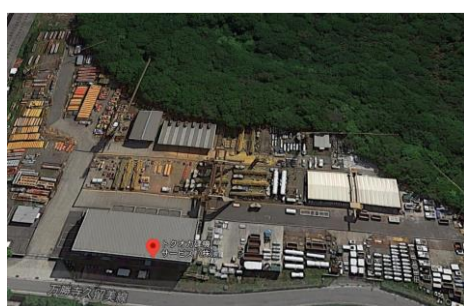
Wastewater circulation treatment was performed using a pump. As a result of the circulation, the turbidity is about 70 NTU. As a result of measuring the water after the circulation was stopped, it was confirmed that the turbidity was improved to 21.9 NTU.



Experimental result  
Turbidity :766NTU⇒21.9NTU  
pH :7.01 ⇒7.03



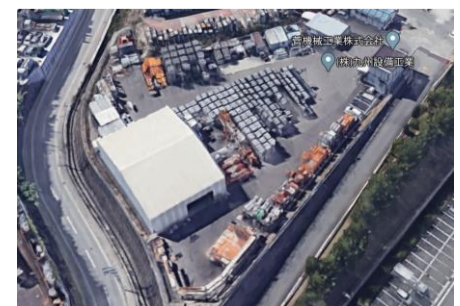
Head Office



MikiCenter, Hyogo Prefecture



Tomisato Center, Chiba Prefecture



Fukuoka Center, Fukuoka Prefecture

## 8. TOYO STAINLESS STEEL KAKOH CO., LTD

looking for  
**SUPPLIER**

### 1. Line of Business / Production Items



flanges  
(both standard and special ones)



clamp couplings



stainless steel welding (vacuum chambers, vacuum pipes)



If you are looking for a company offering stainless steel processing and welding services, Toyo Stainless Steel Kakoh Co., Ltd. is the one to contact!

As a comprehensive manufacturer of stainless steel that handles the production of various stainless steel products, ranging from large equipment to small components, our company works closely with clients from the planning to design phases to help them solve the challenges they have been faced with.

**Main Products:** (1) Processing of stainless steel products (flanges)  
(2) Stainless steel welding in general (mainly the welding of vacuum chambers, vacuum pipes, pipes, tanks, and the like)

**Main Technology:** For the production of flanges and clamp couplings, we use the know-how we've accumulated through our 50-year history. As far as the areas of welding and fabrication are concerned, we have expertise in welding pipes used for ships (such as LPG and LNG tankers). Furthermore, we offer highly skilled vacuum welding in producing vacuum chambers.

**Main customer:** Companies in the plant engineering and vacuum equipment industries

### 2. We are looking for...

**SUPPLIER**

- (1) Stainless steel products (flanges)  
We would like to talk with companies that can produce large-sized versions of those products that are 175 or greater in
- (2) Stainless steel welding in general (mainly the vacuum parts, including pipe welding, tanks, and the like)

**■Companies we desire to talk with:**

- Companies (local companies) that can produce products that are as cost competitive as those made by Chinese companies and that possess quality management systems as good as those run by Chinese companies
- Companies that would not act merely as our suppliers but that will be able to believe that they run factories representative of Thailand and will be able to work jointly with us in enhancing QDC (quality, delivery, and cost) elements related to our joint operations (if possible, we'd like to talk with companies that can handle all phases of manufacturing and delivery—from the procurement of raw materials to the exporting of the products they've made.)

### 3. Company Profile & Contact Information

#### (TOYO STAINLESS STEEL KAKOH CO., LTD/Japan Head Office)

|                       |  |
|-----------------------|--|
| ■Established Year     | : 1970   |
| ■Number of Employees  | : 30   |
| ■Capital (JPY)        | : 10,000,000   |
| ■Quality Certificates | : ISO9001:2015   |
| ■Person in Charge     | : Takashi NAKAMURA (Mr.)   |
| ■Title                | : President  |
| ■Language             | : English, Japanese  |
| ■Address              | : 20-79, Rinkai-cho, Kishiwada-shi,<br>Osaka, 596-0013, JAPAN                                  |
| ■TEL                  | : +81-72-423-9302  |
| ■FAX                  | : +81-72-423-9303  |
| ■E-mail               | : takashi.nakamura@toyostainless-kako.co.jp  |
| ■Website              | : (JP) <a href="http://www.toyostainless-kako.co.jp/">http://www.toyostainless-kako.co.jp/</a> |



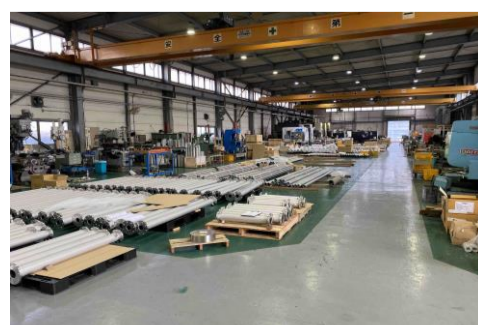
Our company has highly experienced, in-house technicians and engages in advanced stainless steel welding processes, such as arc welding and TIG (tungsten inert gas) welding processes for stainless steel. At the same time, we are working to enhance the QDC (quality, delivery, and cost) elements of our welding projects by streamlining and speeding up the entire operation of creating and delivering welded products, and by doing so, we strive to shorten deadlines and provide our welding services at reasonable prices.



We use high-quality stainless steel and offer an impressive lineup of stainless steel products that meet the Japanese Industrial Standards (JIS) and/or sets of international standards used in occidental countries (US and EU). We possess our own factories that are well equipped with metal cutting machines (CNC machines + other types of machine tools). Furthermore, we strive to improve the QDC elements involved in producing and providing our stainless steel products by streamlining our entire process of creating and delivering them, and by doing so, we have succeeded in reducing the total hours taken to complete a process or processes, lowering costs, and enhancing the quality of these products.



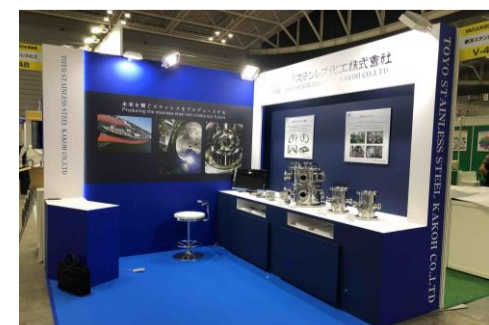
Head Office / Factory



Our 2nd Factory



Machine Factory



Exhibition: Vacuum 2019



**1. Line of Business / Production Items**



**Water Jet Cutting**

By replacing our equipment in August 2019, we tripled the cutting speed and improved cutting quality.



**Shearing and Other Processing**

We can cut stainless steel 304 into plates of up to 20 mm in thickness. Our shearing machine can cut the thickest plate in the industry.



**High-performance Straightening Machine**

We use highly rigid frames and durable rollers in our straightening process, enabling more efficient and uniform straightening than with simple pressing.



**Automated storage and picking system**

Our automated warehouse integrated with cutting machines realizes fully automated processing. Every process, from base material selection and delivery, cutting and residual material storage, to product shipment, is electronically controlled to realize fast machining and perfect traceability.

Around 2,900 stock items are available for immediate delivery. We anticipate evolving metal materials and changing market demands to appropriately stock our items. Our non-stock items can be provided from our partners. We can address various machining requirements.

Practically, we can offer unlimited number of items.

We can accept even small orders such as a single 1 cm<sup>3</sup> block. We can provide your required items in the required quantity.

Regardless of the quantity or dimensions you need, we are ready to address your requirements.

- Main Products:** We process and wholesale steel materials including stainless steel, nickel alloy, titanium alloy, aluminum, copper alloy, etc.
- Main Technology:** We can offer various items in small lots, with fast delivery. You can rely on us. We have everything you need, whether products or services.
- Main Customer:** NIPPON STEEL CORPORATION, NIPPON STEEL Stainless Steel Corporation, JFE Steel Corporation, Kobe Steel, Ltd., Daido Steel Co., Ltd., Aichi Steel Corporation

**2. We are looking for...**

**BUYER**

Various metals (stainless steel, nickel alloys, titanium alloys, aluminum, copper alloys, etc.)

**■Companies we desire to talk with:**

- Wholesalers of metals, or manufacturers producing machinery, equipment, and the like using the metals listed above (types of metals we produce)
- Wholesalers of metals seeking to import low-priced metals from China, Taiwan, Indonesia, and India, and manufacturers

**3. Company Profile & Contact Information**

**(YOSHU TANPAN SANGYO Co., Ltd./Japan Head Office)**

- Established Year : 1933
- Number of Employees : 190
- Capital (USD) : 480,000(USD)
- Quality Certificates : ISO9001
- Person in Charge : Kuninao TANAKA (Mr.)
- Title : Sales Manager
- Language : English, Japanese
- Address : 2-10-154, Nakajima, Yodogawa-ku, Osaka-shi, Osaka, 555-0041, JAPAN
- TEL : +81-6-6473-1884
- FAX : +81-6-6474-1443
- E-mail : kuninao\_tanaka@yoshu.co.jp
- Website : (JP) <http://www.yoshu.co.jp/>

**(YOSHU (THAILAND) .CO..LTD/Thai Head Office)**

- Established Year : 2013
- Number of Employees : 11
- Capital (USD) :-
- Quality Certificates :-
- Person in Charge : Kunihiro Yamashita (Mr.)
- Title : GM Sales
- Language : English, Japanese, Thai
- Address : No. 57 Park Ventures Ecoplex, 11th Floor, Unit 1109, Wireless Road, Lumpini, Pathumwan, Bangkok 10330
- TEL : +66-2108-2249
- FAX : +66- 2108-2312
- E-mail : yamashita@yoshu.co.th
- Website : -



Japan Head Office



Yoshu Thailand